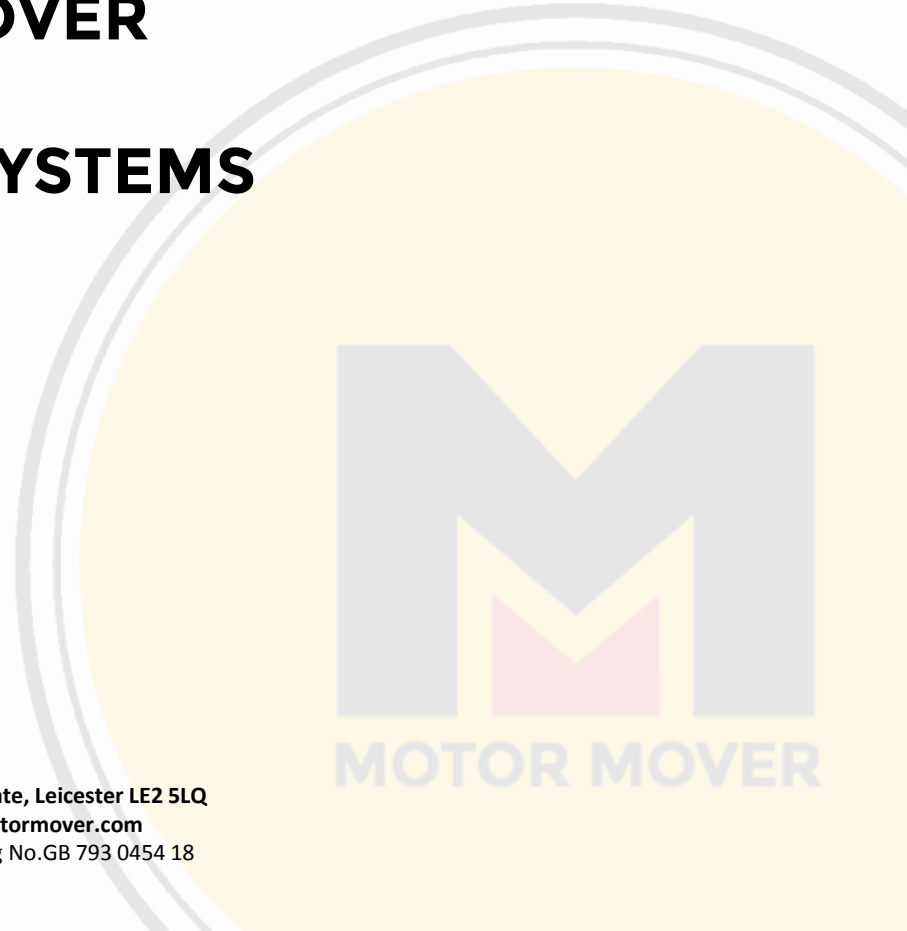




# MOTOR MOVER TRANSPORT SYSTEMS



19 Mandervell Road, Oadby Industrial Estate, Leicester LE2 5LQ  
Tel: 0116 232 8799 Email: [sales@motormover.com](mailto:sales@motormover.com)  
Registered in England No.4389619 Vat Reg No.GB 793 0454 18



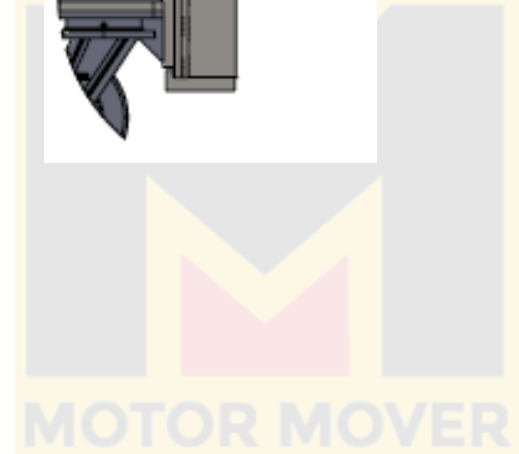
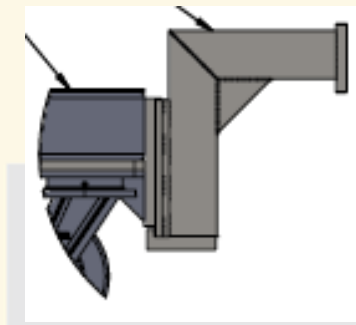
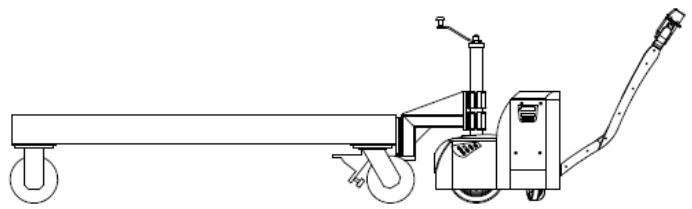
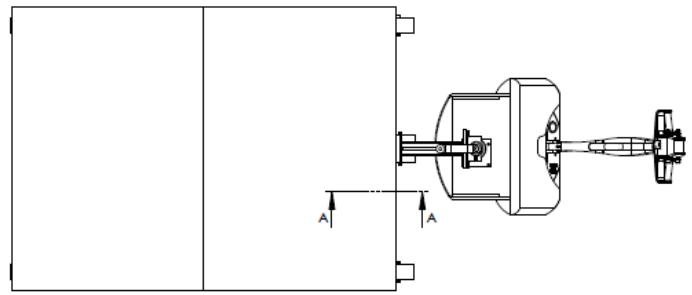
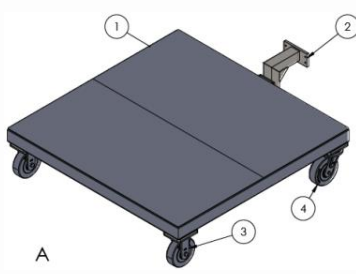
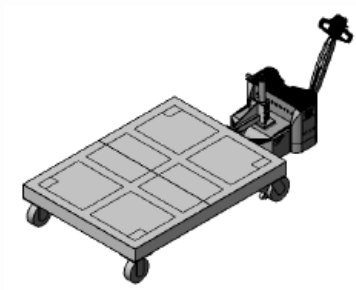
MATERIAL HANDLING

# MOTORMOVER TROLLEY

DESIGNED TO CUSTOMER REQUIREMENTS



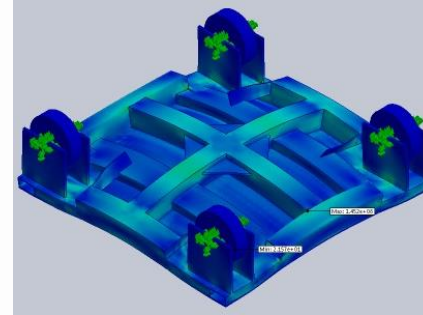
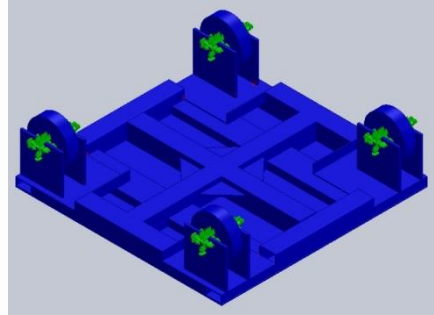
PARAMETERS REQUIRED	SPECIFICATION
Maximum size of item(s) being moved	
Maximum weight of item(s)	
Any height restrictions for trolley	
Method of coupling – Standard plate or Bespoke design	
Flat bed or tread plate on top	
Colour / Finish requirements	





# MOTORMOVER TROLLEY

DESIGNED AND TESTED TO MEET CUSTOMERS REQUIREMENTS  
WHEELS SPECIFIED FOR LOADS WITH SAFETY FACTORS APPLIED





MOTOR MOVER  
MATERIAL HANDLING

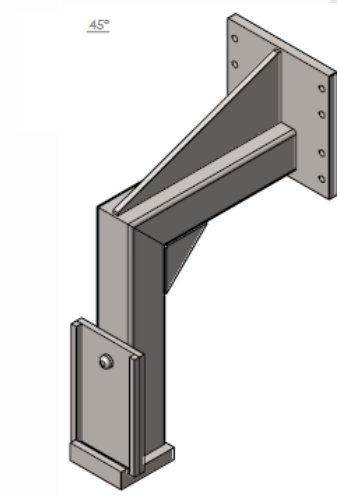
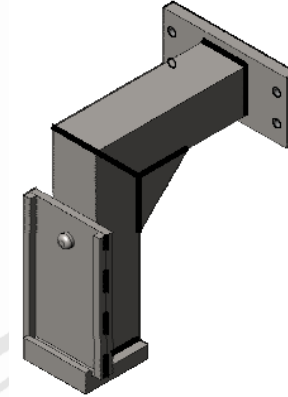
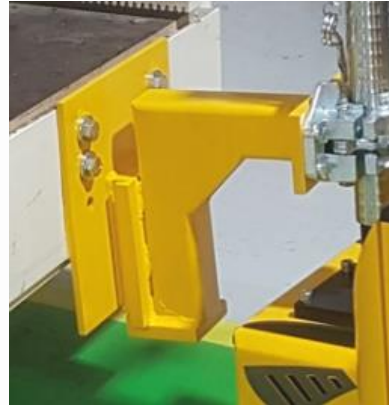
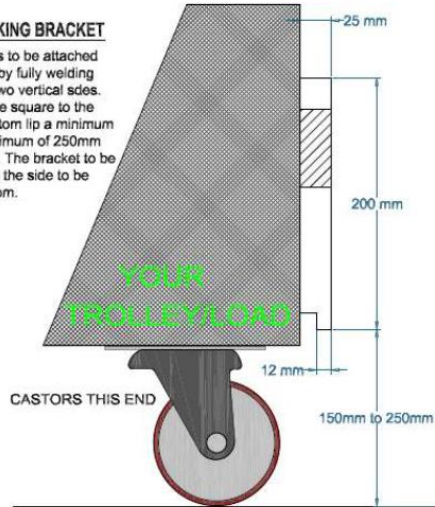
# MOTORMOVER COUPLING

STANDARD COUPLING TO ATTACH TO TRANSPORT SYSTEM  
(BESPOKE OPTIONS AVAILABLE)



## HEAVY DUTY JACKING BRACKET

This coupling needs to be attached to the load / trolley by fully welding round the top and two vertical sides. The bracket must be square to the ground with the bottom lip a minimum of 150mm and maximum of 250mm up from the ground. The bracket to be centrally located on the side to be pulled or pushed from.



MOTOR MOVER